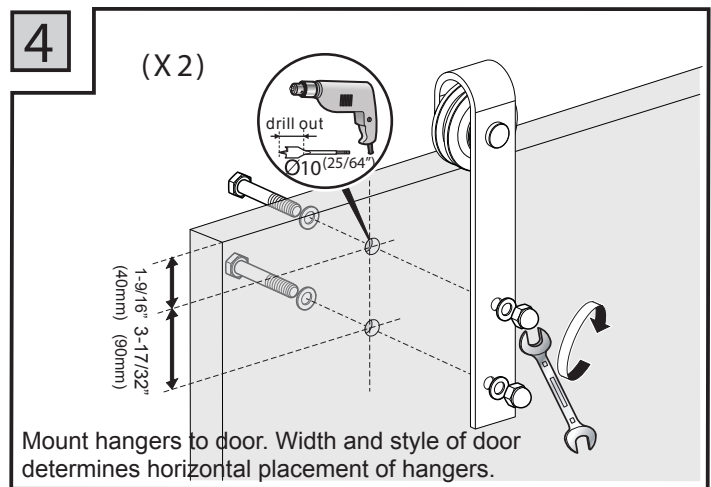
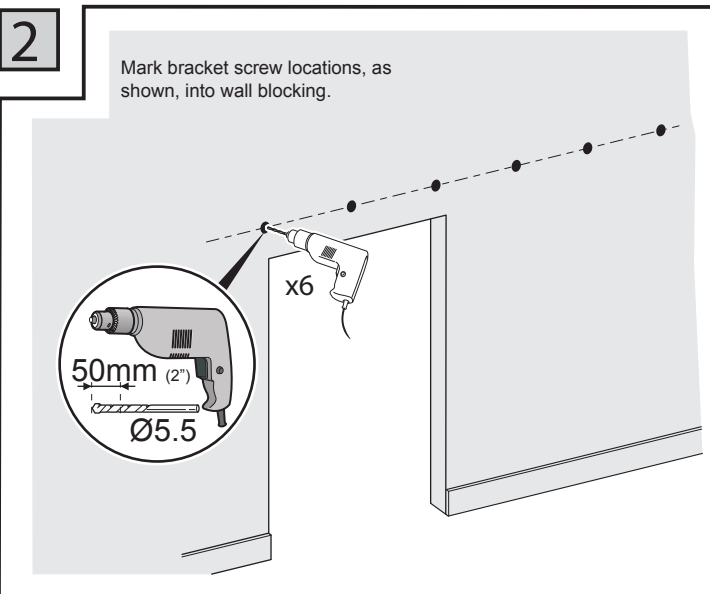
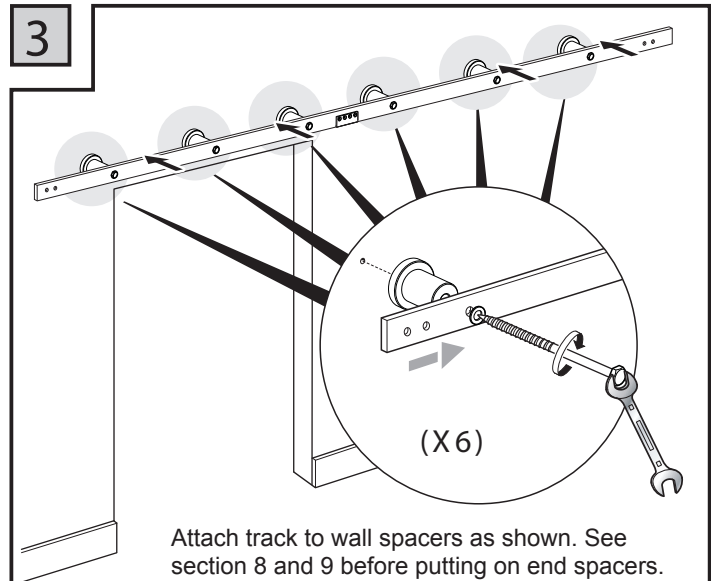
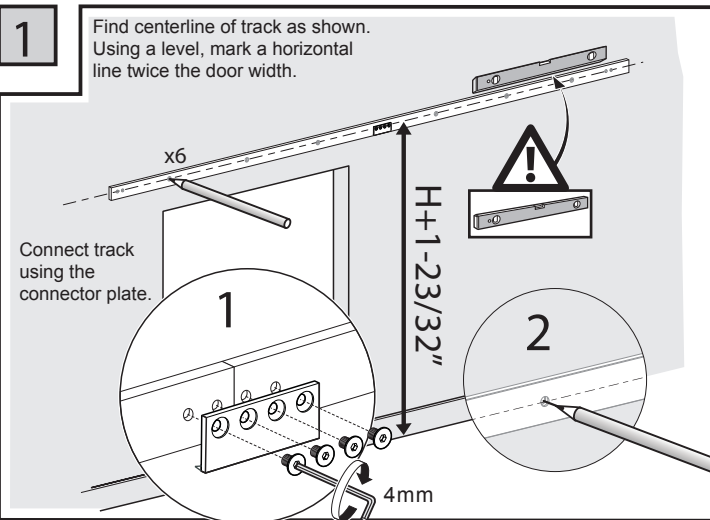
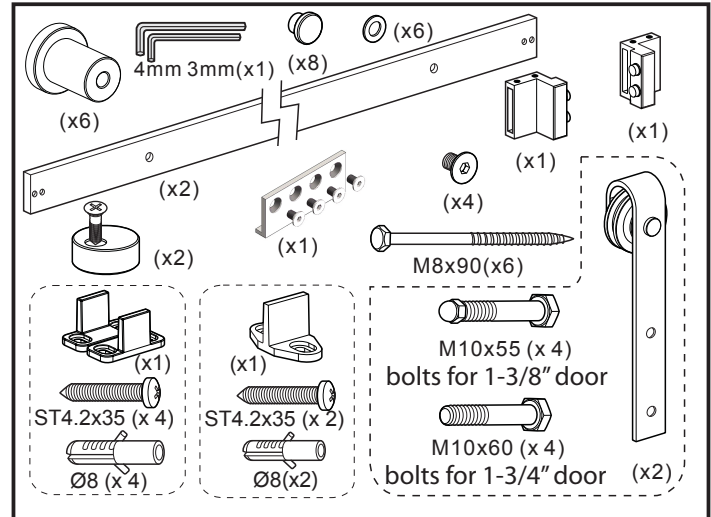
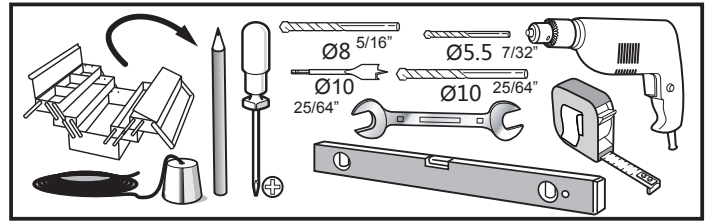
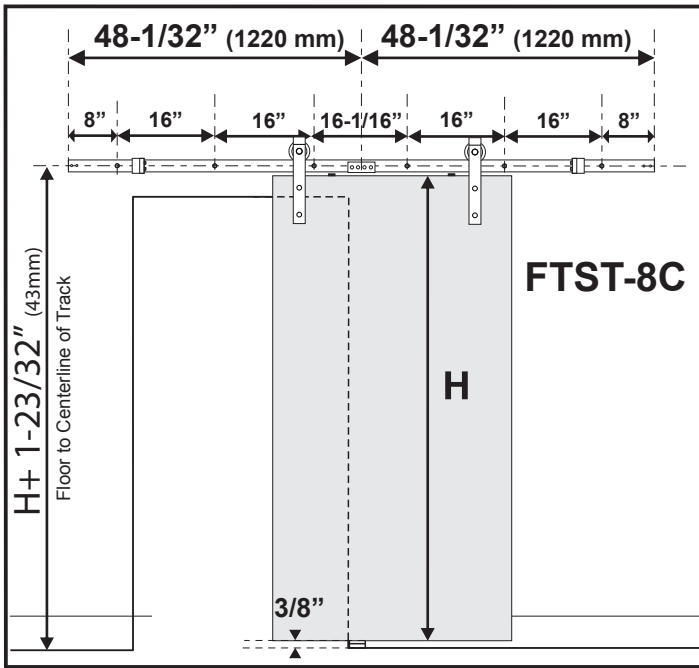


FTST-8C INSTALLATION INSTRUCTIONS



5

Attach anti-jump blocks onto door.

(X2)

6

1

Lift door onto track. Rotate anti-jump blocks over door

2

7

Plumb the door and mark for position of door guide. Mount guide to floor.

30mm

Ø8

7mm

20mm

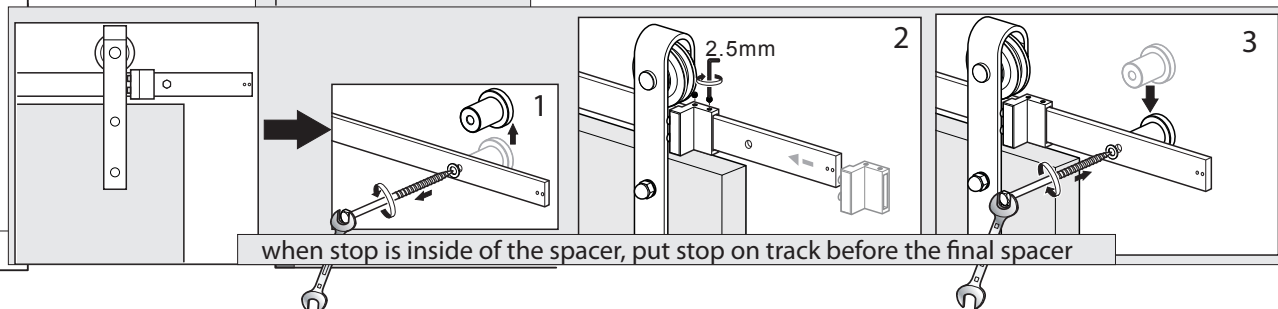
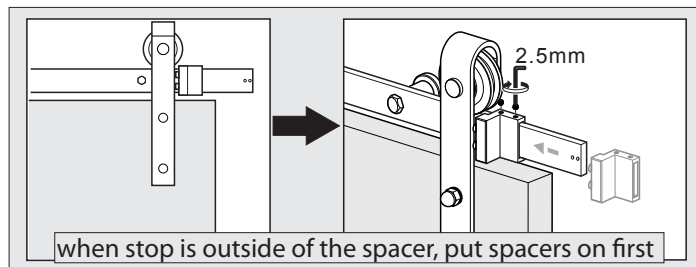
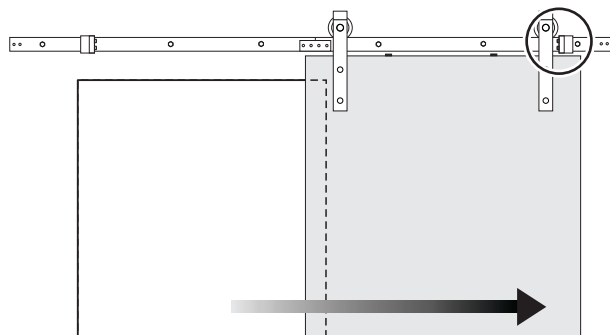
Choose either guide.

8

when stop is outside of the spacer, put spacers on first

when stop is inside of the spacer, put stop on track before the final spacer

9



8

